

Architects in Schools  
**Summer Camp**

# DAY 2

Tuesday, July 27

## *Designing from Many Perspectives*

*Please complete Day 1 activities  
before moving ahead*

**afo**

architecture foundation of oregon

**Hey There Architects!** We hope you had fun learning about architecture and the design process yesterday. Were you able to grasp an understanding of why empathy is so important to think about when designing a space? Don't worry if you don't understand quite yet. We'll continue to explore this idea for the rest of camp.

Today, let's think about what spaces would look like from different points of view, or different **perspectives**. Perspective means the way that you see and experience a situation or experience a space that you are in. If a space makes you feel happy, you might have a positive perspective on that space. If a space makes you feel uncomfortable, you might have a negative perspective on that space.

Let's learn more about how perspective and point of view are used in design and the design process!

### Day 2 Materials List

*Keep these materials nearby as you work through today's lesson*

- Your Architect Journal
- A few sheets of paper
- Pencil and eraser
- Black pen
- Ruler
- Colored pencils, markers or crayons (something to color with)
- A flat surface to work on

#### LIVE Activity Materials

- More of the materials listed above
- Any other materials you'd like to use for this exercise - you'll get to be as creative as you want!

Join us for our  
**LIVE activity**  
today at  
**12:30pm PST!**  
**CLICK HERE**  
**TO JOIN**

## Warm Up

What would spaces look like from a worm's point of view? How about a bird's point of view? How differently would a bird and a worm experience the same space? Probably pretty differently, right? Take a look at the images below. Viewing a space from above is very different than viewing a space from below.



This image is a bird's eye view of New York City on the east coast of the United States.

See more bird's eye views of cities around the globe:

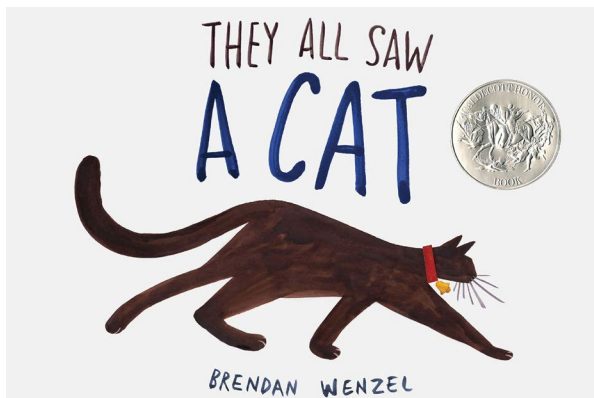
[www.hongkiat.com/blog/bird-eye-view-cities/](http://www.hongkiat.com/blog/bird-eye-view-cities/)



This image is a worm's eye view of Singapore, a country in Southeast Asia.

Take a look at more images from a worm's eye view:

[www.pinterest.com/alileefg/teaching-art-perspective-worms-eye-view/](http://www.pinterest.com/alileefg/teaching-art-perspective-worms-eye-view/)



Watch a read aloud of this fun book, "They All Saw a Cat" by Brendan Wenzel. This story will help you understand how your perspective shapes what you see.

Watch now:

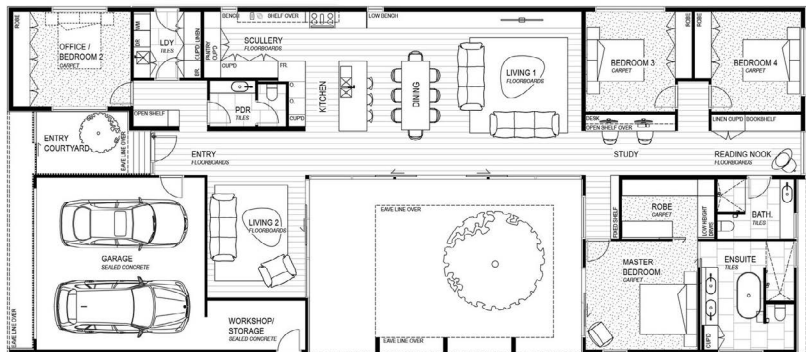
[https://youtu.be/z\\_YLeJhAP\\_M](https://youtu.be/z_YLeJhAP_M)

## Day 2 Vocabulary

Today's words to remember are:

**Facade** is the outward appearance or the face of a building. It is what people see when they look at a building from the street.

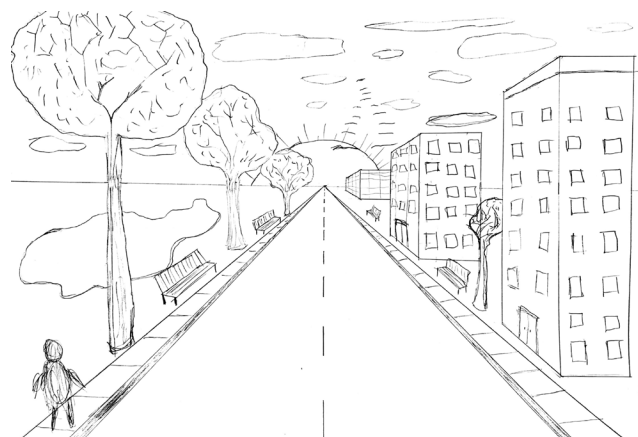
**Floor Plan** is an architectural drawing of a room or building being viewed from above or from a bird's eye view, similar to a map.



**Horizon Line** is the line in a drawing or picture where the earth appears to meet the sky. The vanishing point exists along the horizon line.

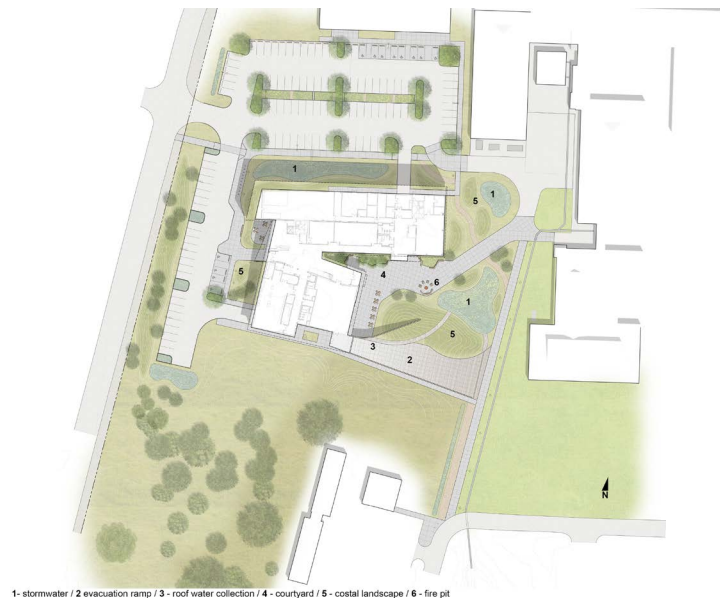
**Perspective** is someone's point of view, or the way that someone sees and experiences a situation or a space that they are in.

**Perspective Drawing** is a two-dimensional drawing that feels three-dimensional and shows how a building or space might look in real life to the human eye.

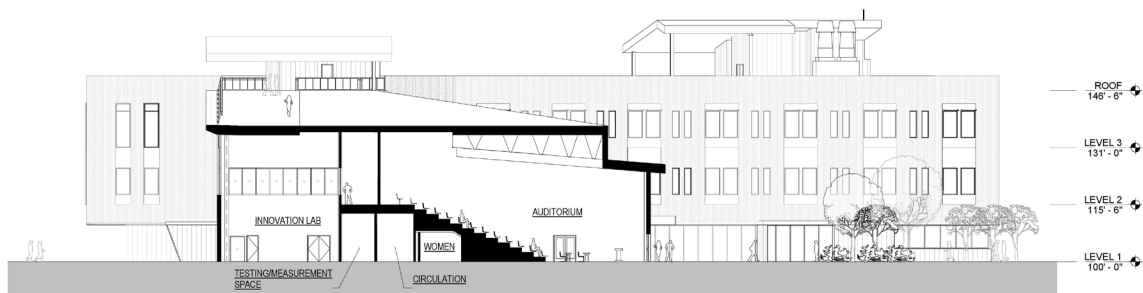


## Day 2 Vocabulary

**Site Plan** is an architectural drawing of a site being viewed from above, similar to a floor plan or map. This drawing shows beyond the walls of a building, extending to surrounding streets, trees or property, and sometimes shows multiple buildings.



**Section Drawing** is an architectural drawing that shows the interior of a space by slicing a structure in half vertically and exposing the inside.



**Vanishing Point** is the point at which something viewed in a perspective drawing or image grows narrower, smaller or increasingly faint & disappears altogether at the horizon line. Often, in a drawing, it is the middle point of the paper and is identified by a dot in which lines (road, railroad track or river) converge.

### Today's Video

In today's video, you'll meet Crystal and Johann who will teach you more about perspective, empathy and the different drawings that architects create, including floor plans, section drawings, site plans and perspective drawings. Architects use these drawings to communicate their designs to engineers and contractors.



### **Day 2 Video: Designing from Many Perspectives**

Watch now:

<https://youtu.be/aEFLArwusVQ>

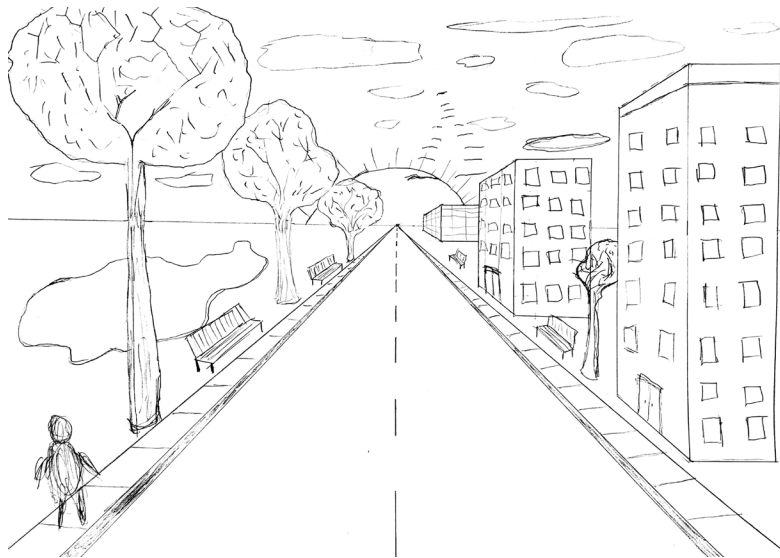


### **Day 2 Activity: Create a Perspective Drawing**

---

After you watch today's video, continue working on your perspective drawing on page 12 of your **Architect Journal**. Color it in and get creative!

After you are done with your perspective drawing, answer the Day 2 Takeaway Questions on page 13 of your **Architect Journal**. There is also another Vocabulary Mix & Match on page 14 of your journal. See if you can remember the definitions of some of the vocabulary words you learned today. Match the definitions to the word you think they go with!



### **Join Today's LIVE Activity!**

Make sure you login to our LIVE camp activity today at 12:30pm PST. You'll get to think about what YOU would look like as a building!

**CLICK  
HERE  
TO JOIN**

### ★ Bonus Challenge: A Worm's Eye View

Today's challenge is to put yourself into the shoes of a worm. Yes, a worm!! Follow the Day 2 Bonus Challenge steps on page 15 of your **Architect Journal**. How differently would a worm experience a room in your home? What would the room look like from their point of view? Draw your room from a worm's eye view!

Watch this video to get some ideas: <https://youtu.be/cY6UePPITYU>

Materials needed:

- Your Architect Journal
- A piece of paper
- Pencil and eraser
- Ruler
- Colored pencils, markers or crayons (something to color with)

## Share Your Work With Us!

Don't forget to take pictures and videos of the things you design, draw and build throughout this camp. We would love to see what you create! Plus, when you submit images of your work, you'll have the chance to be featured on our [shared camp board!](#)

Ask a parent or guardian to help you submit your work using this form: [bit.ly/ais21-shareyourwork](http://bit.ly/ais21-shareyourwork)

See other  
people's work  
on our shared  
camp board!

[TAKE ME  
THERE!](#)